

10 Years of Open-Source Robotics

Embedded Linux Conference 2015
San Jose

Laurent Pinchart
laurent.pinchart@ideasonboard.com

RENESESAS



iRrobotique





www.razer.co.uk



WORLD CHAMPIONS forever

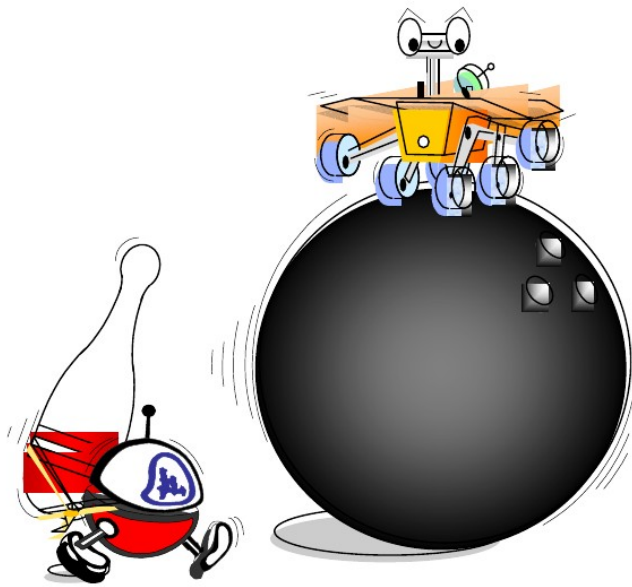
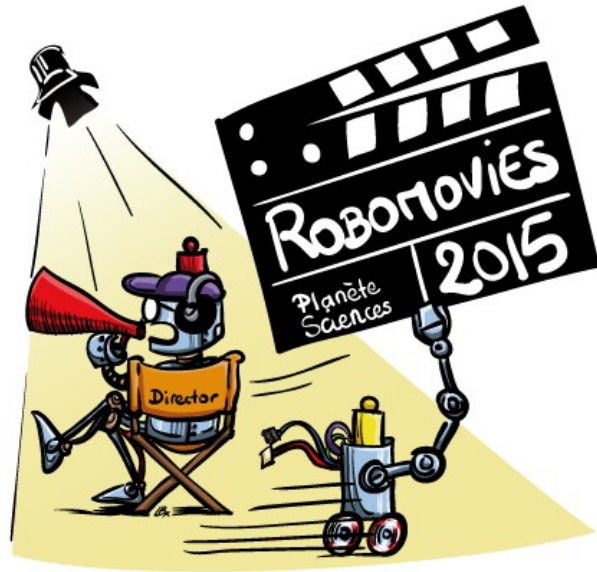




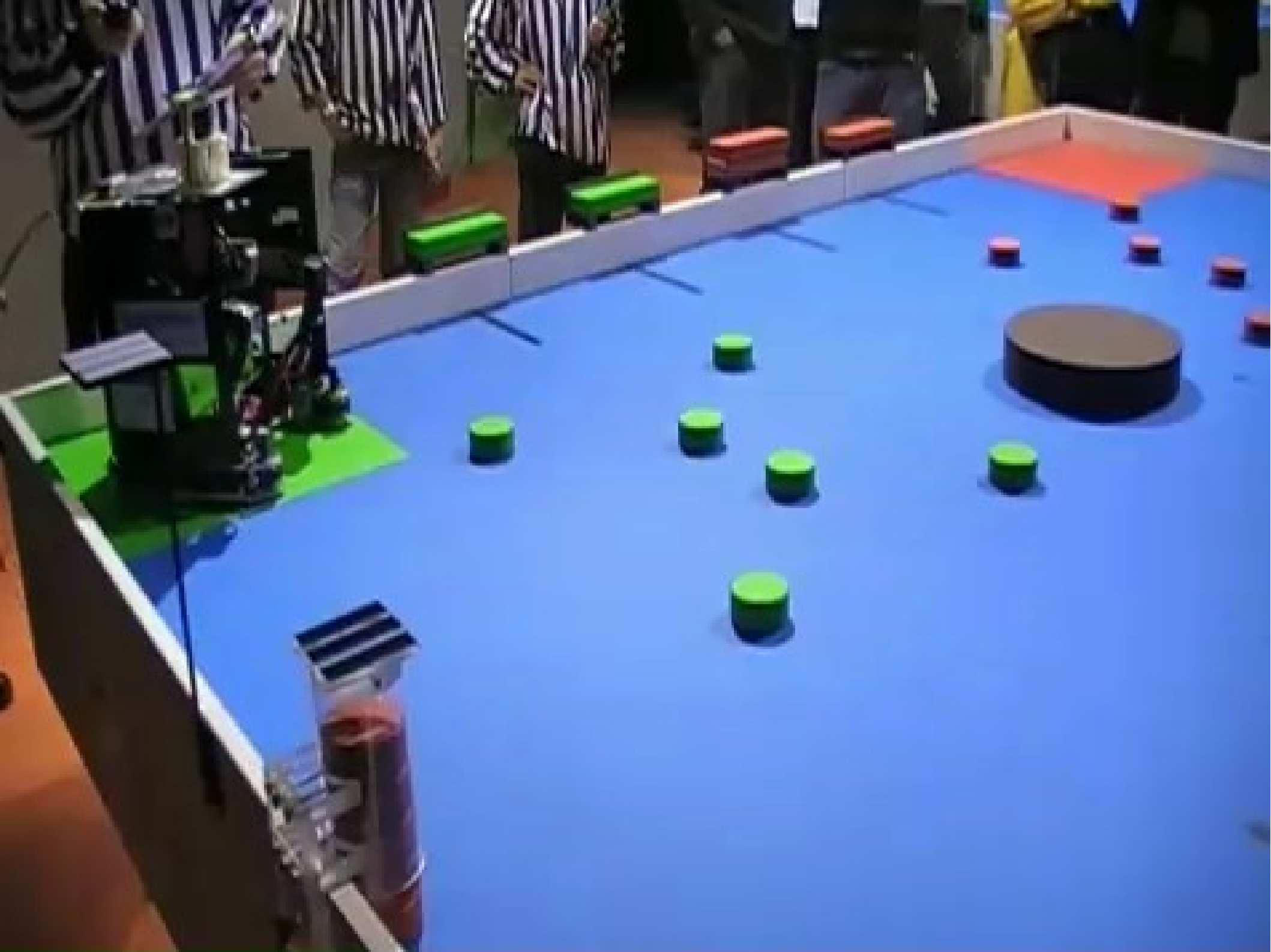
Robotics
Challenge
Competition
Challenges
International
Grand
Robofest
SAURO
VEX
IARRC
Micro ABU
UAV
IARC
Donkey
RoboRAVE
European
Engineering
ITURO
IGVC
METU
Maritime
RobotX
Competition DARC
RoboCup
Micromouse
RoboCup Land
AUVSI
FIRST
Student
Collegiate
IRO
DARPA
WRO
SAUC-E
IEEE
Botball
UBBOTS
Outback
Events
BEST
RoboGames
RoboCon
DefconBots
Foundation's
Centennial
Robot
Air
Trials
Maslab
RoboCon
EUROBOT
Road AAAI
Flying

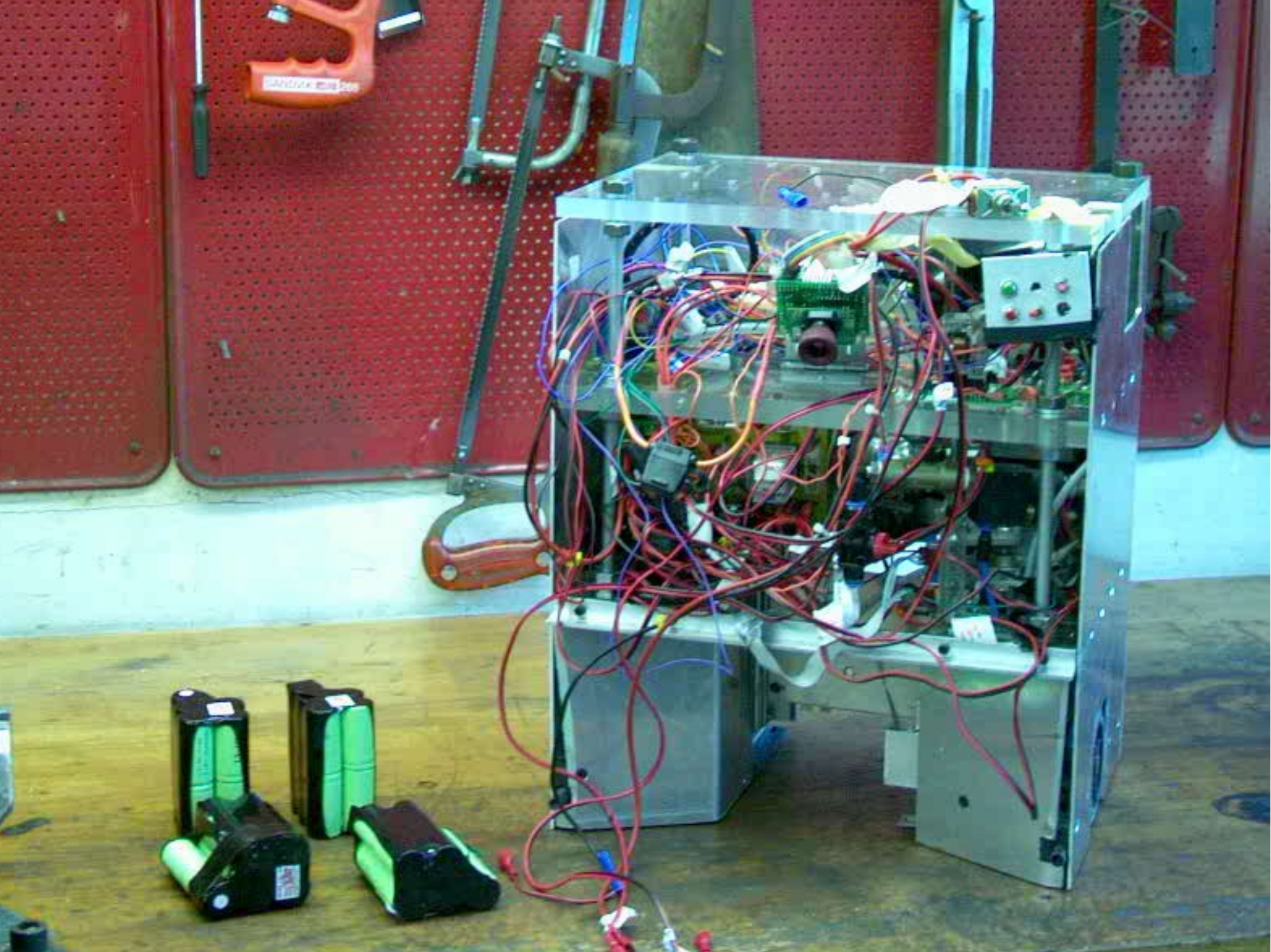


eurobot



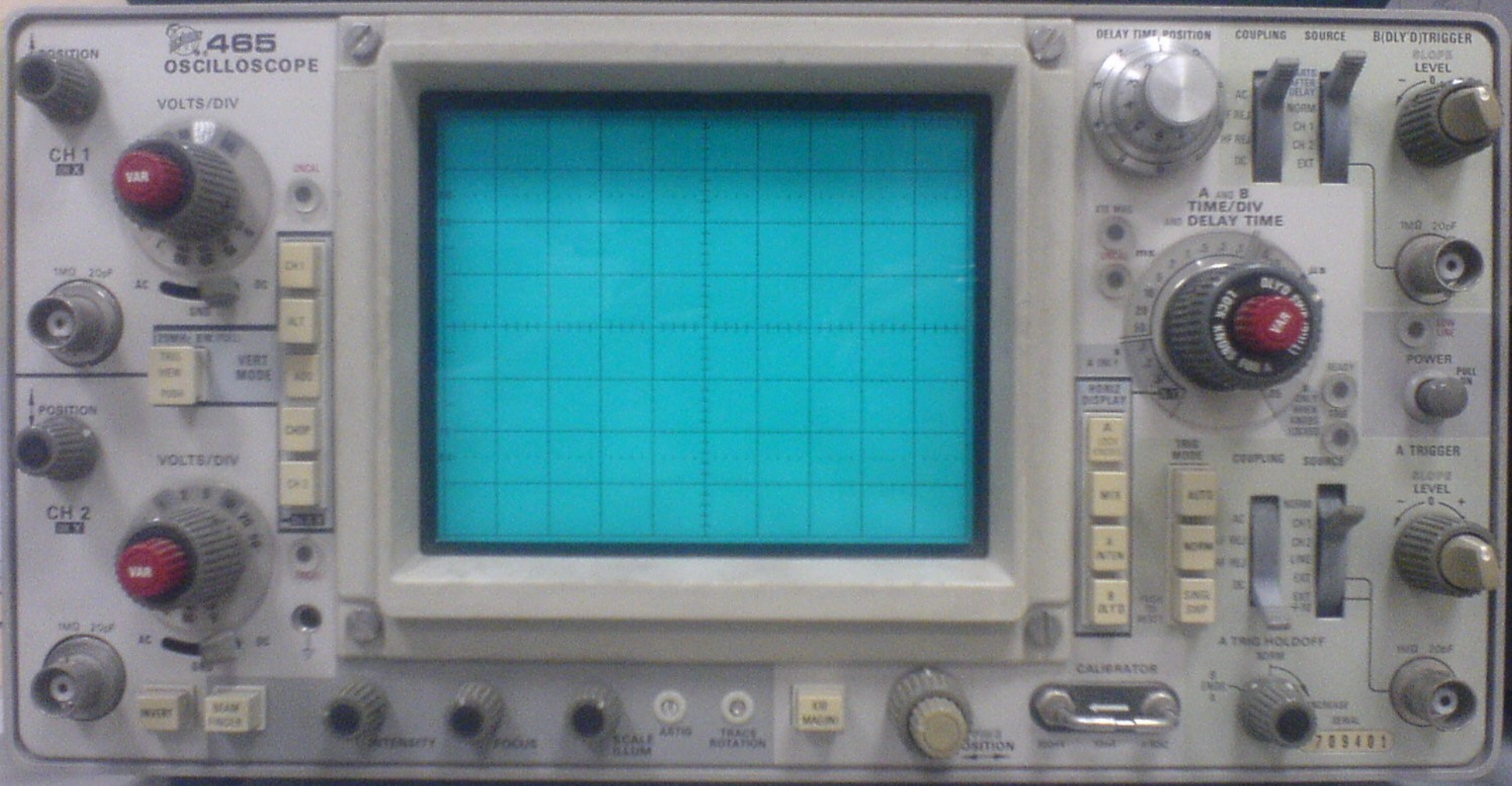












465
OSCILLOSCOPE

VOLTS/DIV

CH 1

VAR

VOLTS/DIV

CH 2

VAR

DELAY TIME POSITION

COUPLING

SOURCE

B(DLY) TRIGGER

A AND B
TIME/DIV
AND
DELAY TIME

DEF. HOLD

A TRIGGER

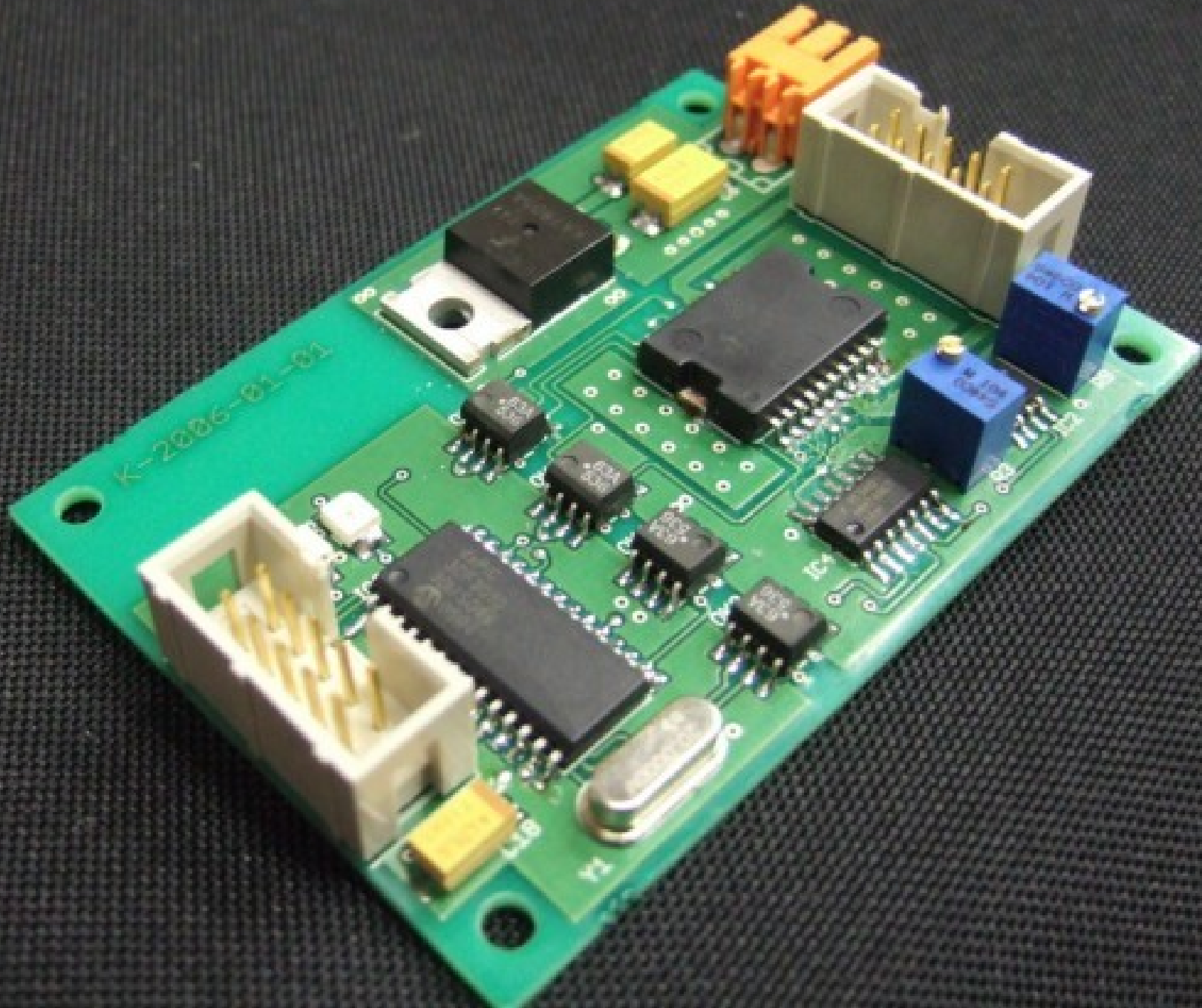
CALIBRATOR

709401

106x









commit c0efd232929c2cd87238de2cccdaf4e845be5b0c

Author: Laurent Pinchart <laurent.pinchart@skynet.be>

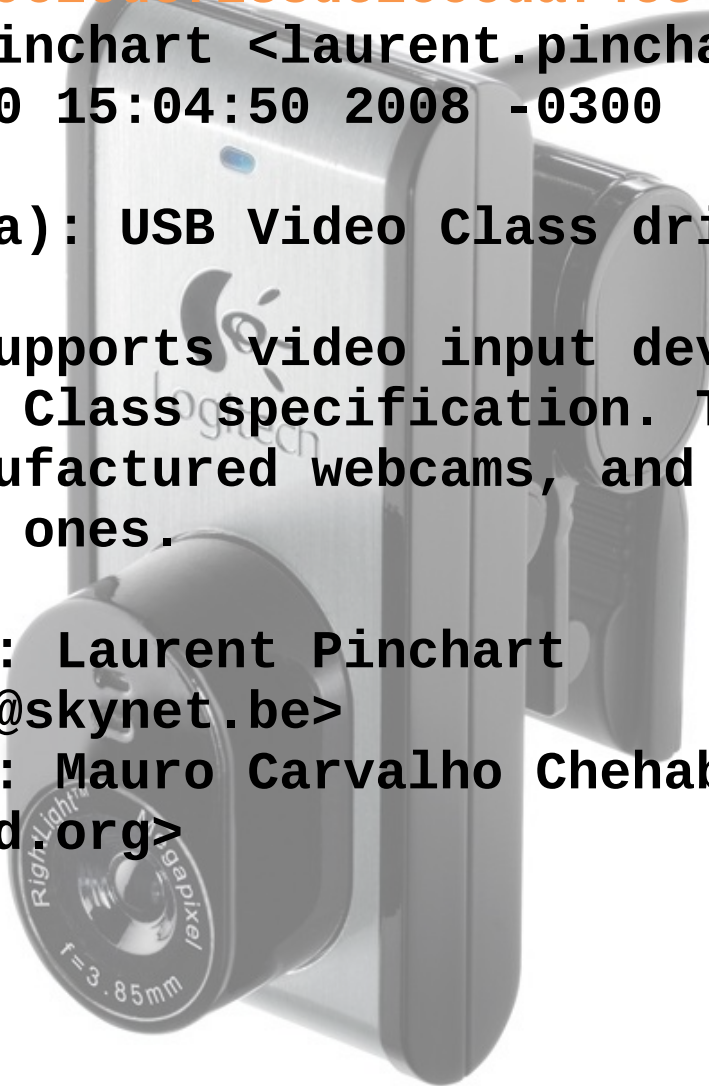
Date: Mon Jun 30 15:04:50 2008 -0300

V4L/DVB (8145a): USB Video Class driver

This driver supports video input devices compliant with the USB Video Class specification. This means lots of currently manufactured webcams, and probably most of the future ones.

**Signed-off-by: Laurent Pinchart
<laurent.pinchart@skynet.be>**

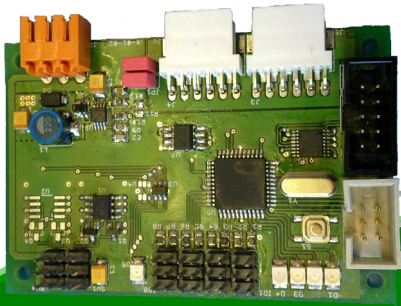
**Signed-off-by: Mauro Carvalho Chehab
<mchehab@infradead.org>**



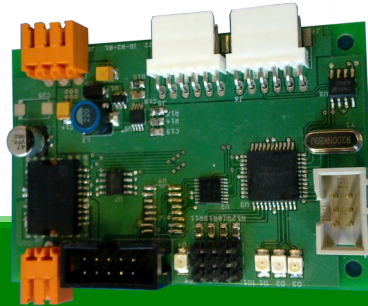


iRobotique

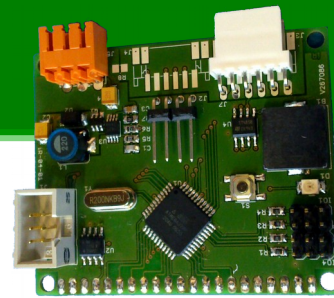
iR4-Neuron



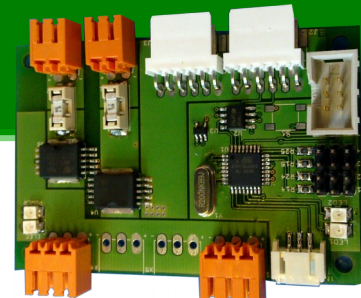
iR4-PSC



iR4-Motion



iR4-Supply





Robot programming crash course

Part 7 - Serial ports - Transmitter

Laurent Pinchart <laurent.pinchart@irobotique.be>
Christophe Chariot <christophe.chariot@irobotique.be>
February 16, 2010

1 Introduction

This lesson will introduce the basics of asynchronous serial communications. Two serial protocols, RS-232 and RS-485, will be explained. Students will learn how to transfer data between a computer and the microcontroller using an RS-232 link.

2 Serial communications

In computer science, serial communication is a data transfer mechanism in which data is sent one bit at a time over a communication channel. This is in contrast with parallel communication where several bits (usually a multiple of 8) are transferred simultaneously.

While it may seem that serial links are inherently inferior to parallel links because they transmit less data during the same time frame, newer serial technologies allow much higher clock frequencies that lead to higher data rates than parallel links.

Serial links are usually easier and cheaper to implement than parallel links, as they involve less interconnections and can achieve similar or higher speeds.

2.1 Synchronization

Transmitters and receivers on a serial link need to be synchronized to communicate reliably. Synchronization can be achieved by sharing a common clock between the transmitter and receiver (*synchronous transmission*), or including synchronization information in the data stream (*asynchronous transmission*).

Synchronous transmissions offer a greater throughput but require either an out-of-band clock or an in-band clock coupled with a clock recovery device, making the system slightly more complex and the hardware more expensive when high data rates are required.

Most microcontrollers include serial communication controllers for common asynchronous protocols and short range synchronous protocols (such as I²C and SPI).